

Each drug is recommended for use in combination with other antiretrovirals (except Atripla, Complera, Stribild, and "572-Trii"). Dose may need to be adjusted; see drug page or package insert for complete information. Drugs shown are actual size, except for Fuzeon. Thanks to Renata Smith, PharmD, University of Illinois at Chicago. Drug chart information is current as of February 7, 2013. See the POSITIVELY AWARE 2013 HIV Drug Guide at www.positivelyaware.com/drugguide for details. For a list of Walgreens pharmacies that specialize in HIV/AIDS care and other resources, go to www.HIV.walgreens.com.

NRTI, NRTI
NUCLEOSIDE/NUCLEOTIDE REVERSE TRANSCRIPTASE INHIBITOR ("NUKE")



Combivir

lamivudine / zidovudine, or 3TC / AZT
One tablet (150 mg lamivudine / 300 mg zidovudine), twice daily. No food restrictions (take with or without food). Generic is available.



Epivir

lamivudine, or 3TC
One 300 mg tablet, once daily; or one 150 mg tablet twice daily. No food restrictions (take with or without food). Generic is available.



Retrovir

zidovudine, AZT, or ZDV
One 300 mg tablet, twice daily. No food restrictions (take with or without food). Generic is available.



Truvada

emtricitabine / tenofovir DF, or FTC / TDF
One tablet (200 mg emtricitabine / 300 mg tenofovir DF), once daily. No food restrictions (take with or without food).



Viread

tenofovir disoproxil fumarate, or TDF
One 300 mg tablet, once daily. No food restrictions (take with or without food).



Ziagen

abacavir sulfate, or ABC
Two 300 mg tablets, once daily (or one 300 mg tablet twice daily). No food restrictions (take with or without food).



Emtriva

emtricitabine, or FTC
One 200 mg capsule, once daily. No food restrictions (take with or without food).



Epzicom

abacavir / lamivudine, or ABC / 3TC
One tablet (600 mg abacavir / 300 mg lamivudine), once daily. No food restrictions (take with or without food).



Trizivir

abacavir / lamivudine / zidovudine, or ABC / 3TC / AZT
One tablet (300 mg abacavir / 150 mg lamivudine / 300 mg zidovudine), twice daily. No food restrictions (take with or without food).



Videx EC

didanosine, or ddI
One 400 mg capsule, once daily with adjustments for weight and drug interactions (see the Drug Guide). Take on an empty stomach, one hour before or two hours after food or drink, except water. Generic is available.



Zerit

stavudine, or d4T
One 40 mg capsule, twice daily with adjustments for weight (see the Drug Guide). No food restrictions (take with or without food). Generic is available.



Edurant

rilpivirine hydrochloride, or RPV
One 25 mg tablet, once daily. Take with food (a meal of at least 400 calories).

NNRTI
NON-NUCLEOSIDE REVERSE TRANSCRIPTASE INHIBITOR ("NON-NUKE")



Intelence

etravirine, or ETV
One 200 mg tablet, twice daily, or two 100 mg tablets, twice daily. Take with food.



Sustiva

efavirenz, or EFV
One 600 mg tablet, once daily or three 200 mg capsules, once daily. Take on an empty stomach, or may be taken with a light, low-fat snack.



Rescriptor

delavirdine, or DLV
Two 200 mg tablets, three times a day (or four 100 mg tablets, three times a day). No food restrictions (take with or without food).



Viramune XR

nevirapine, or NVP
One 200 mg IR (immediate release) tablet daily for the first 14 days, then one 400 mg Viramune XR tablet once daily, or one 200 mg IR tablet twice daily, or two 200 mg IR tablets once daily (once daily IR dose not FDA approved). No food restrictions (take with or without food). Generic nevirapine (IR) is available.

PI
PROTEASE INHIBITOR



Aptivus

tipranavir, or TPV
Two 250 mg capsules with two 100 mg tablets Norvir, twice daily. Aptivus must be taken with Norvir. Take with food with Norvir tablets. No food restrictions with Norvir capsules, but food may improve Norvir tolerability.



Invirase

saquinavir, or SQV
Two 500 mg tablets with one 100 mg tablet Norvir, twice daily. Invirase must be taken with Norvir. Take with food, or within two hours after a meal.



Lexiva

fosamprenavir calcium, or FPV
Two 700 mg tablets plus 100 mg or 200 mg Norvir, once daily or two 700 mg tablets, twice daily (if protease inhibitor experienced, 700 mg with 100 mg Norvir, twice daily). No food restrictions (take with or without food).



Prezista

darunavir, or DRV
One 800 mg tablet or two 400 mg tablets, with 100 mg Norvir, once daily for first-time therapy, or one 600 mg tablet plus 100 mg Norvir, twice daily for treatment-experienced people. Must be taken with Norvir. Take with food.



Viracept

nelfinavir, or NFV
Two 625 mg tablets, twice daily (or five 250 mg tablets, twice daily). Take with a meal.



Crixivan

indinavir, or IDV
Two 400 mg capsules, every 8 hours, or two 400 mg capsules with 100 mg Norvir twice a day. Take with no food or a low-fat snack (with food with Norvir); drink at least 1.5 liters of water (approximately 48 ounces) daily.



Kaletra

lopinavir / ritonavir, or LPV / r
Four tablets (200 mg lopinavir / 50 mg ritonavir), once daily if fewer than 3 lopinavir resistance mutations, or two 200 / 50 mg tablets, twice daily. Half-strength film-coated 100 mg lopinavir / 25 mg ritonavir tablet available. No food restrictions, but food may improve Norvir tolerability.



Norvir

ritonavir, or RTV
Used mostly for boosting, 100-400 mg dosed once or twice daily with another PI. Must be taken with food.



Reyataz

atazanavir sulfate, or ATV
One 300 mg capsule plus 100 mg Norvir, once daily or two 200 mg capsules (without ritonavir), once daily for treatment-naïve adults (see the Drug Guide for details). Take with food.



Isentress

raltegravir, or RAL
One 400 mg tablet, twice daily. No food restrictions (with or without food).

INSTI
INTEGRASE INHIBITOR



dolutegravir

dolutegravir, or DTG
One 50 mg tablet once a day for people on HIV therapy for the first time. Twice-daily dosing in people who have viral resistance to Isentress and elvitegravir. Expected to have no food restrictions. (Not yet approved at press time.)



elvitegravir

elvitegravir, or EVG
150 mg once a day boosted with 150 mg cobicistat. Take with food. (Not yet approved at press time.)

FI
FUSION INHIBITOR



Fuzeon

enfuvirtide, T-20, or ENF
90 mg, subcutaneous injection twice daily (every 12 hours). No food restrictions (take with or without food).



Selzentry

maraviroc, or MVC
150, 300, or 600 mg (available in 150 and 300 mg tablets), twice daily, depends on other medications used (see the Drug Guide for details). No food restrictions (take with or without food).

STR
SINGLE-TABLET REGIMEN



Atripla

efavirenz / emtricitabine / tenofovir DF, or EFV / FTC / TDF
One tablet (600 mg efavirenz / 200 mg emtricitabine / 300 mg tenofovir DF), once daily. Take on an empty stomach, or may be taken with a light, low-fat snack.



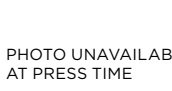
Complera

rilpivirine / emtricitabine / tenofovir DF, or RPV / FTC / TDF
One tablet (25 mg rilpivirine / 200 mg emtricitabine / 300 mg tenofovir DF) once daily. Take with food (with a meal of at least 400 calories).



Stribild

elvitegravir / cobicistat / emtricitabine / tenofovir DF, or EVG / COBI / FTC / TDF
One tablet (150 mg elvitegravir / 150 mg cobicistat / 200 mg emtricitabine / 300 mg tenofovir DF) once daily. Take with food.



"572-Trii"

dolutegravir / abacavir / lamivudine, or DTG / ABC / 3TC
One tablet (50 mg dolutegravir / 600 mg abacavir / 300 mg lamivudine) once a day for people on HIV therapy for the first time. Twice-daily dosing in people who have viral resistance to Isentress and elvitegravir. (Investigational drug.)

PKE
PK ENHANCER



cobicistat

or COBI
150 mg once a day. Cobicistat is not an HIV drug, but is used to increase the levels of elvitegravir (investigational INSTI, see elvitegravir page) and HIV protease inhibitors. (Not yet approved at press time.)



POSITIVELY AWARE 2013 HIV DRUG CHART SPONSORED BY

